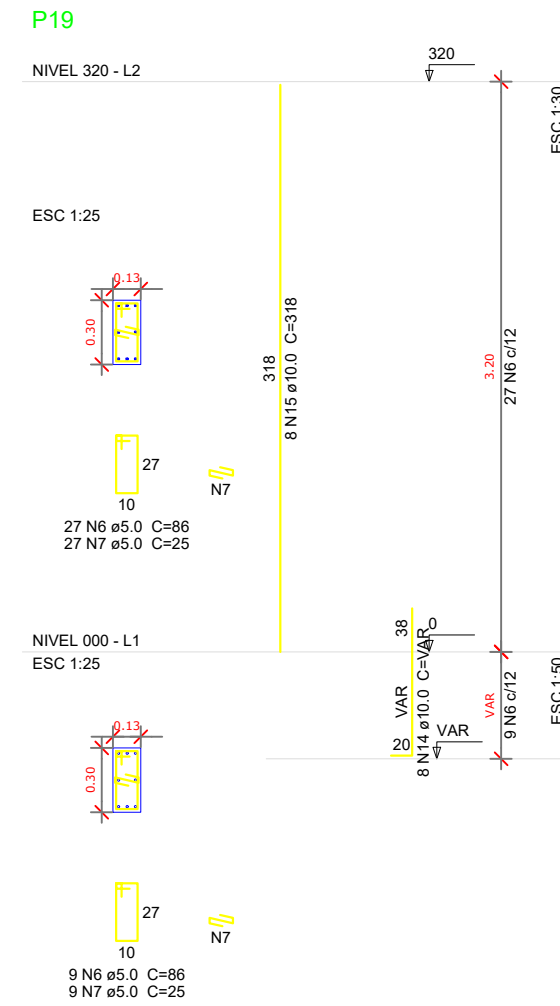
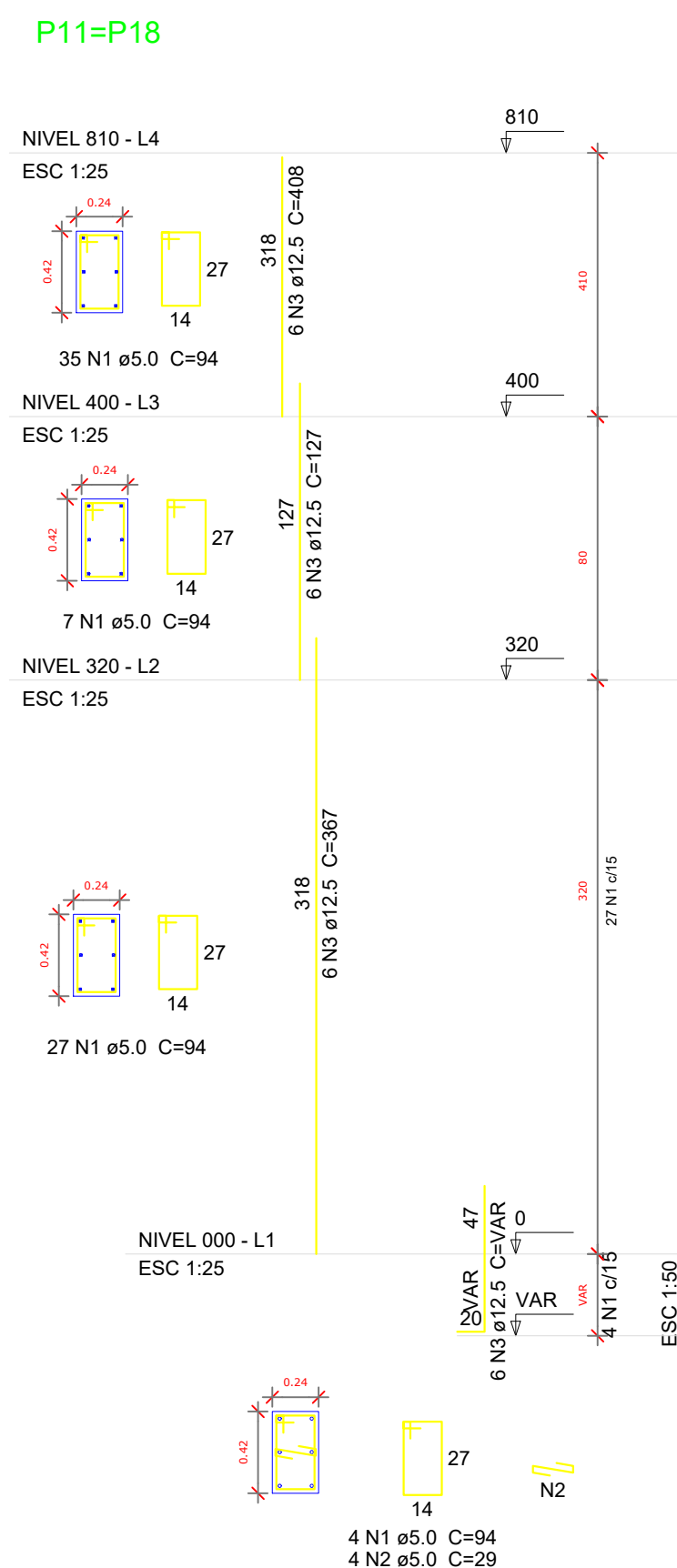
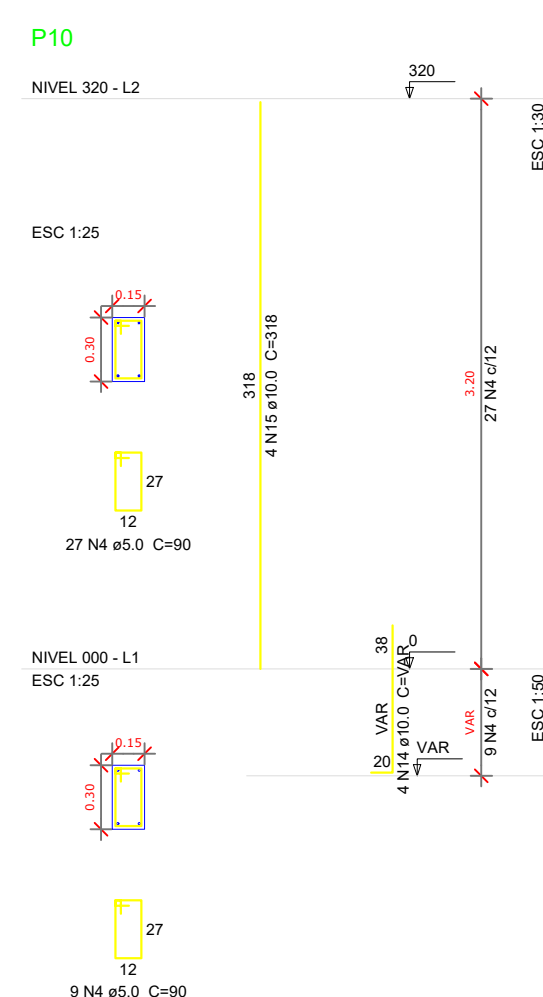


Resumo do aço			
AÇO	DIAM (mm)	C.TOTAL (m)	PESO + 10 % (kg)
CA50	6.3	74.8	20.1
	8.0	82.8	35.9
	10.0	256	173.6
	12.5	654.3	693.3
CA60	5.0	921.6	156.3
PESO TOTAL (kg)			
CA50	923		
CA60	156.3		

VOLUME de concreto (C-25) = 6.04 m³
Área de forma = 91.36 m²

[illegible]